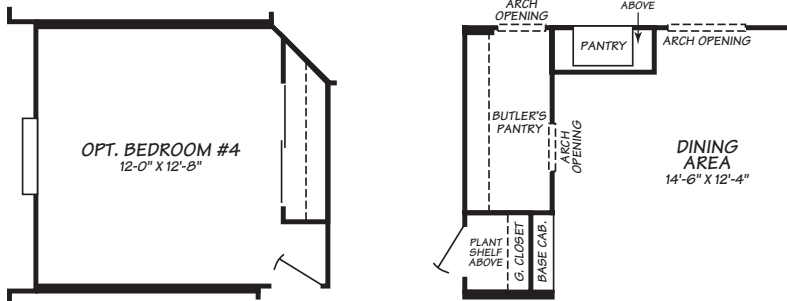
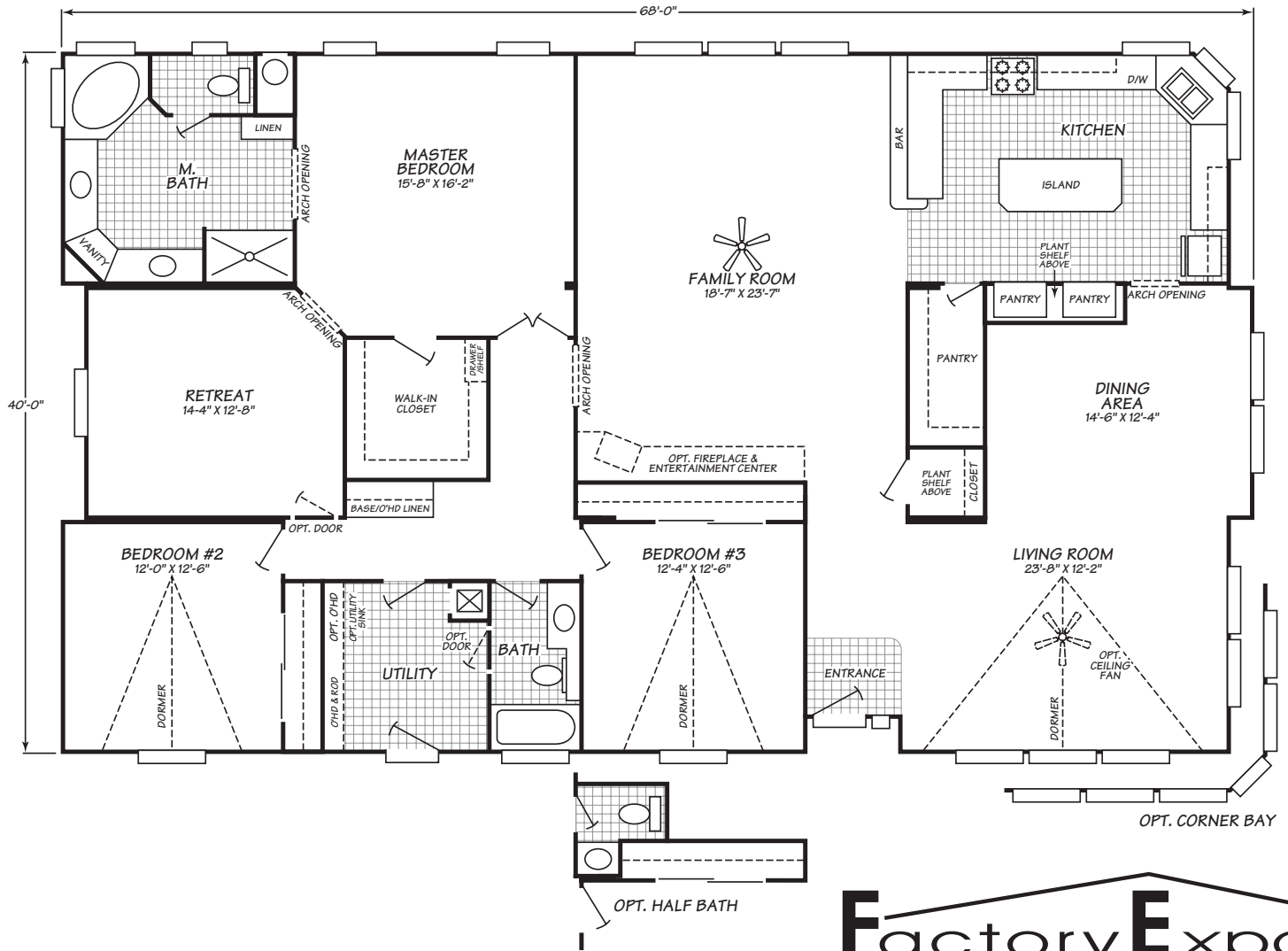


Northridge

Barrington Series

3 Bedroom, 2 Bath
Approx. 2,653 SQ. FT.

Last Updated: 8-6-09

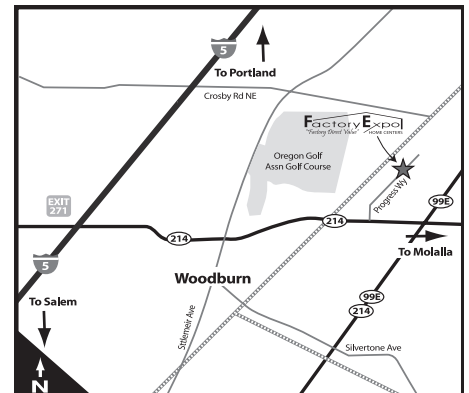


ALTERNATE BUTLER'S PANTRY

Factory Expo

"Factory Direct Value" HOME CENTERS

2555 Progress Way • Woodburn, OR 97071



For Detailed Directions See Map On Our Website

1-800-889-8548